



# EB3A Product Training

**Authorised Distributor in  
Dubai For Bluetti products**

**20230406**





# CONTENTS

PART 01

**Product Overview**

PART 02

**Operation**

PART 03

**Charging & Discharging**

PART 04

**App Uses**

PART 05

**Tutorial**

PART 06

**Troubleshooting**

PART 07

**FAQs**



# Product Overview



• EUROPE



• Australia



• UK



• USA/JP

## BLUETTI EB3A

Battery Capacity	268.8Wh(12000mAh)/@22.4V
Cell Type	LiFePO4 (2500+ Cycles to 80%)
Dimensions (L*W*H)	10.04×7.09×7.20in/255×180×183mm
Weight	10.14lb/4.6kg
Discharging Temperature	-4°F~104°F/-20°C~40°C
Charging Temperature	32~104°F/0~40°C
Working Humidity	10-90%

# Product Overview- Diagram



## AC Output

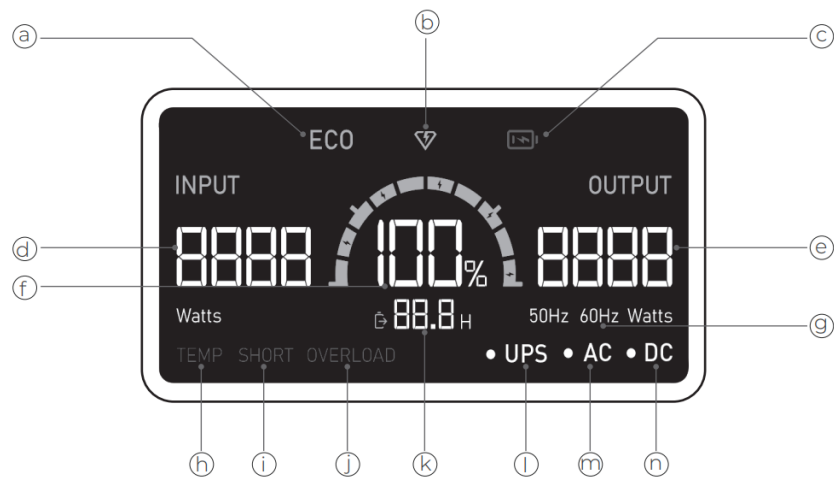
Rated power output	100-120V	600W	JP/USA
	<b>220-240V</b>	<b>600W</b>	<b>EU/UK/AU/DE</b>
Surge	1200W		
Frequency	50/60Hz±0.3Hz		

## DC Output

Port	Voltage	Current
Cigarette Lighter Port *1	12VDC	10A
DC5521 *2	12VDC	10A
USB-A *2	5VDC	3A
USB-C PD3.0 *2	(5V/9V/12V/15V/20VDC, 3A; 20VDC, 5A)	
Wireless Charging *1	5W/7.5W/10W/15W Max.	

- |                             |                    |                  |                              |
|-----------------------------|--------------------|------------------|------------------------------|
| 1. Charging Port (DC7909 F) | 4. LED Lamp Button | 7. USB-C Port*2  | 10. Cigarette Lighter Port*1 |
| 2. LCD Screen               | 5. LED Lamp*1      | 8. USB-A Port*2  | 11. AC Power Button          |
| 3. Wireless Charging Pad*1  | 6. DC Power Button | 9. DC5521 Port*2 | 12. AC Outlet*2/4            |

# Operation- LCD Display



a: ECO Mode

b: Turbo Charging

c. Low-battery Alert

d: Input Power (W)

e. Output Power (W)

f: Battery Capacity/SOC

g. AC Frequency 50/60Hz)

h. Temperature Alarm

i. Short-circuit Alarm

j. Overload Alarm

k. Remaining Time Indicator

l. UPS Indicator

m. AC Indicator

n. DC Indicator

## Turbo Charging:

1. Fast charging mode: AC+PV, total 430W Max, Single AC Input 340W Max, @10-45C;
2. Standard mode: 268W Max, @10-45C;
3. Silent mode: 100W Max;

Power limit:

1. 150W MAX, @45-48C or battery pack voltage at 24-24.2V: 2.
2. 100W MAX, @<10C or battery voltage is less than 19.5V or greater than 24.2V:

g. AC Frequency 50/60Hz)

## UPS Indicator:

Connect the EB3A with the AC power and the 'UPS' will be on display. Then Turn-ON the AC output. When on this mode, the AC power will directly support the loads on AC output ports and charge the EB3A.

If your AC wall power goes out, the unit switches to using the battery almost within 20ms instantaneously

# Operation- Power ON/OFF Switch



## LCD screen:

Simply press any button (AC/DC or LED light) , the LCD screen will stay about 30-60 seconds.

## Power ON:

When display "ON" press and hold the AC, DC or LED light Power Button for 1sec to Turn-ON the corresponding output.

Green light (on the button) **ON**

LCD Display **ON**

## Power OFF:

Press and hold AC/DC or LED Light Power button for 2s to shut down corresponding output.

Green light (on the button) **OFF**

LCD Display **OFF**

# ▶ Operation- Setting

## Entering the Setting Mode:

When the AC output power is "OFF" & Display "ON", Press AC & DC power buttons simultaneously and the frequency indicator flashes.

## AC Frequency:

Under 'Setting Mode', press the AC power button to switch 50/60Hz.

## ECO Mode:

Under 'Setting Mode', press the DC power button to Turn ON/OFF.  
(In this mode, the AC/DC output will automatically Turn-OFF after 1/2/3/4 hour(s) if the delivering power lower( $\leq 10W$  for AC,  $\leq 1W$  for DC) or no load to save power.) or no load.

## Query Error Code:

Press and hold AC and LED buttons simultaneously for 2s to check the error code.

## SN Information:

Press and hold DC and LED buttons simultaneously for 2s to check the SN information.

## Firmware Information:


Press and hold AC, DC and LED buttons simultaneously for 2s to check the firmware information



## Power Lifting Mode: *Enable in BLUETTI App*

When on this mode, both output voltage and current can be adjusted to a higher level for running high-powered purely resistive load between 600W to 1200W.

# LCD Screen- Fault Notification

Error Code	Fault information	Description	Troubleshooting
	Battery Low Voltage	SOC≤4%	Recharge
TEMP	Abnormal temperature	1. When the AC part is higher than 80°C 2. When the DC part PD/DC12V is higher than 100°C 3. When the Charging part greater than 48°C or lower than 0°C 4. When the battery discharge temperature is greater than 65°C lower than -20°C	1. Recover <75°C 2. Recover <95°C 3. Recover <95°C 4. Recover <50°C
OVERLOAD	Output overload	AC overload: When the AC output power exceed 660W	Reduce load, press AC button to resume
SHORT	Output short circuit	1. AC output short circuit, Turn OFF AC; 2. USB output short-circuit, Turn OFF DC; 3. DC12V output short circuit, Turn OFF DC;	Please disconnect the load to make sure the output power of loads meet the limit of the EB3A.

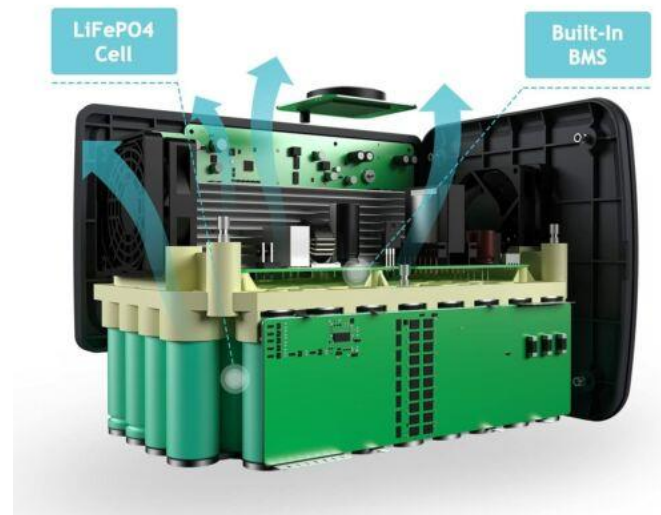




# Fan parameter

1. Fan ON : <b>AC output power</b> > 500W, Fan OFF : AC output power < 450W (10sec Conti.....)
Inverter temperature >65°C, fan duty cycle 20%, for every 1C increase, duty cycle increases by 5%, Radiator temperature <63°C
2. Fan ON : <b>PV power</b> > 100W, Fan OFF : PV power < 90W, (10sec Conti.....)
3. Fan ON : <b>DC output power</b> > 95W, Fan OFF : DC output power < 85W, (10sec Conti.....)
4. Fan ON : <b>Charging power</b> > 100W, Fan OFF : Charging power < 90W, (10sec Conti.....)
5. Fan ON : When charging power reports TEMP, Fan OFF : No Alarm
Noise Level Max. : ≤55dB

**SAFE & DURABLE**  
**LIFE CYCLE 2500+**



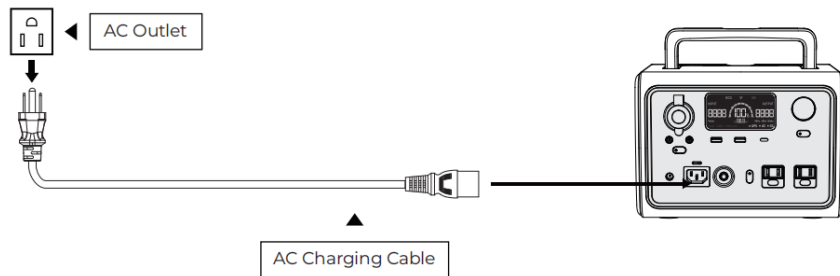
# ▶ Charging

## 1. AC Charging

Simply plug the into a standard wall outlet via adapter and start charging.

**Turbo Charging Mode (350W)=1.3hrs**

**Standard Mode(268W)=1.5hrs**



## 2. CAR Charging

Connect the EB3A directly to the vehicle plug-in cigarette lighter port via the car charging cable.

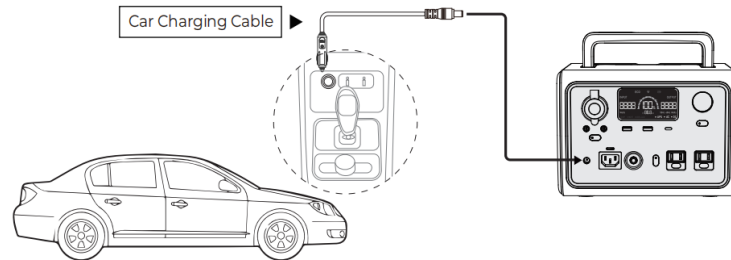
**Power: 200W Max.**

**Voltage: 12-28VAC**

**Current: 8.5A Max.**

**12V(100W)=3 hrs**

**24V(200W)=2 hrs**

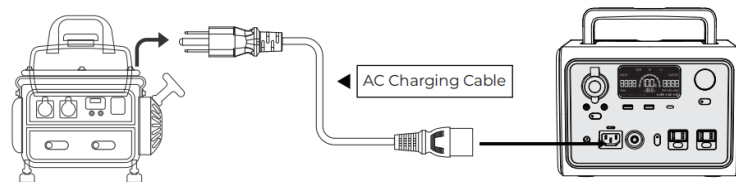


## 3. Generator Charging

Connect the AC adapter input plug to the generator while the output plug goes to the adapter charging port of EB70.

**Turbo Charging Mode (350W)=1.3hrs**

**Standard Mode(268W)=1.5hrs**



## 4. PV (Solar panel) Charging

Connect the solar panels (in series or parallel) to EB70 via the solar charging cable.

Note: Please make sure your solar panels comply with:

**Voc: 12-28V**

**Input Power: 200W Max**

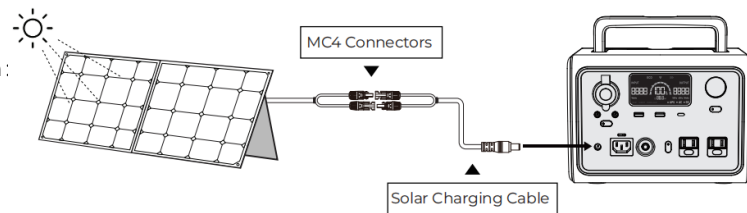
**Current: 8.5A Max.**

E.g. Use one BLUETTI PV200 solar panel to charge the unit.

BLUETTI PV200: Voc=26.1V Vmp=20.5V Current= 9.7A Max.

**PV200 Solar Panel(200W)=2hrs**

**PV120 Solar Panel(120W)=3hrs**



# ▶ Discharging time- (Estimated)

$$\text{Discharging time} = (\text{Battery Capacity}) \times \text{DoD} \times \eta \div (\text{Load power} + \text{Self consumption})$$
$$= (268\text{Wh}) \times \text{DoD} \times \eta \div (\text{Load power} + \text{Self consumption})$$



Drone  
60W  
**4.5**  
Times



Fan  
20W  
**11**  
Hours



Laptop  
100W  
**3.5**  
Times



iPhone 12  
**25**  
Times



Mini Fridge  
60W  
**3.6**  
Hours



Camera  
5W  
**50**  
Times



Light  
5W  
**30**  
Hours



CPAP  
25W  
**9**  
Hours

Depth of Discharge, DoD = 80%~90%

$\eta$  is the local inverter efficiency.  $\eta = 90\%$



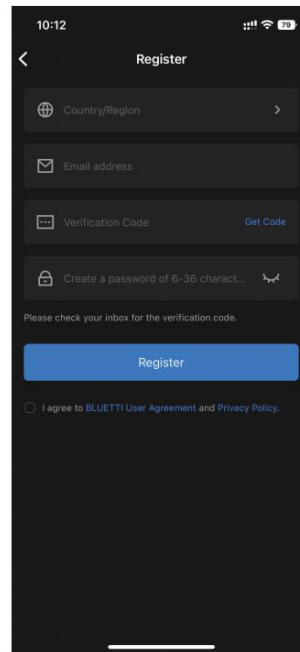
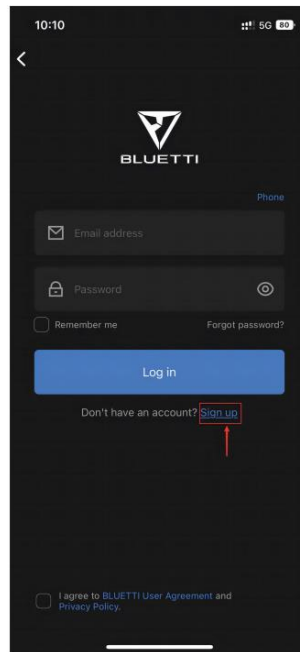
# How to use the App- Download & Login

BLUETTI app allows you to monitor and control the EB3A in the palm of your hand via Bluetooth, with features like In-time Alarm, Error Message, Data Collection, Operation Status, Parameter Configuration, and Firmware Upgrade.

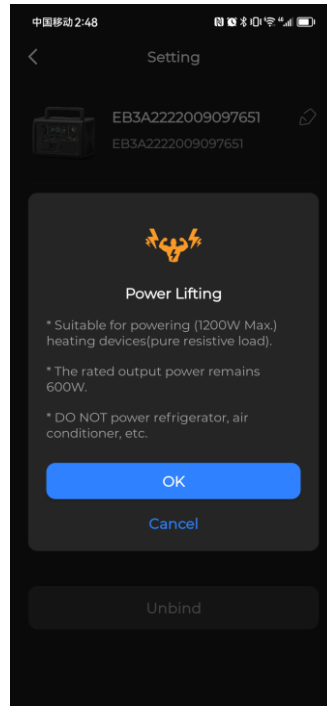
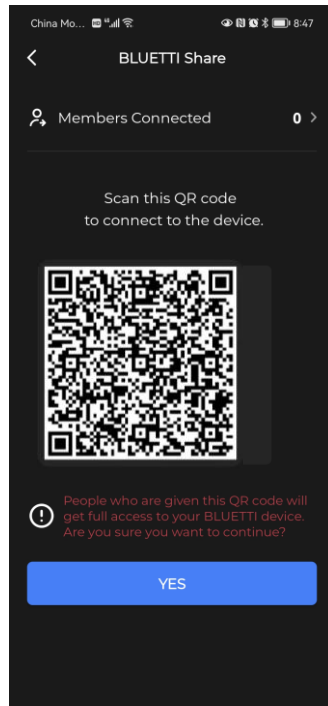
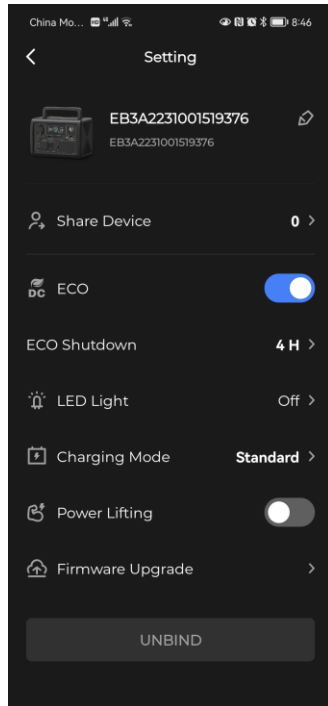
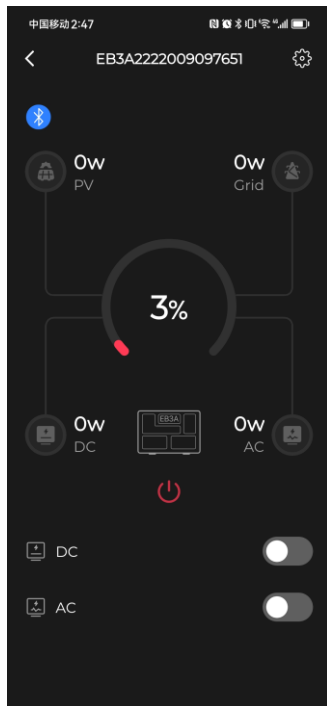
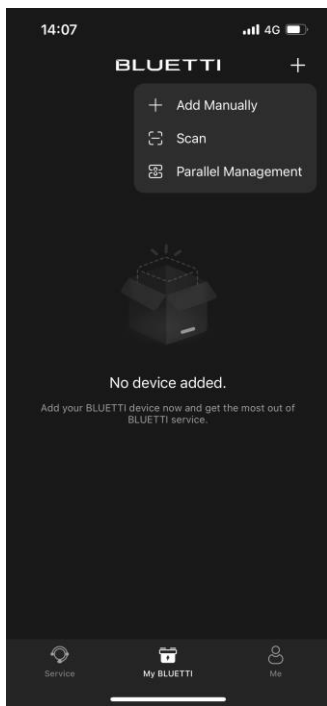
Scan the QR code to download the BLUETTI App or search for BLUETTI\* in the App Store/Google Play



Check your email account you used in the BLUETTI App for the verification code sent from BLUETTI server and fill in the activation code located within the email to activate your BLUETTI account.



# How to use the App- Connect with EB3A



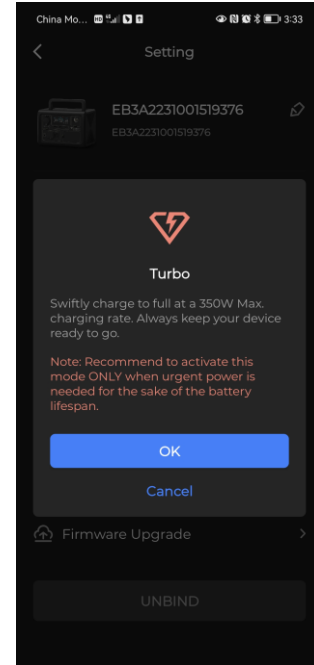
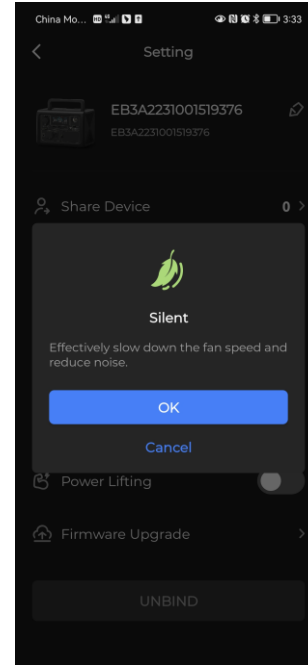
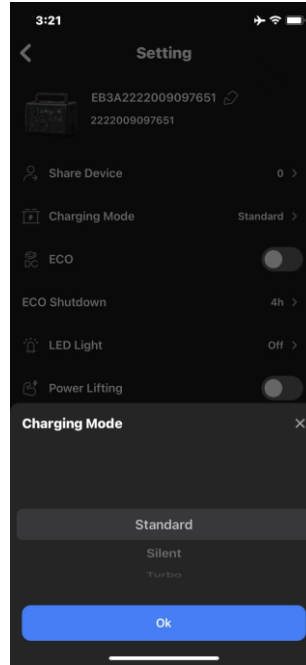
## Share Device:

Share the QR code with your friends or family to get the access of your EB3A.

## 4.3 How to use the App- Charging Mode

Three charging modes are available in the app:

- Standard: 268W Max
- Silent: 100W Max
- Turbo: 430W(AC+PV) Max





# Tutorial video





# Tutorial- How to control via APP



# Tutorial- How to charge EB3A





## **Q: AC output not working**

A: Check whether there is an alarm message on the display screen

1. **OVERLOAD**- Means that the machine has activated overload protection
2. **SHOT**- Means short circuit protection
3. **TEMP**- Means over temperature protection

Check whether the load specification exceeds the EB70 output specification. Please disconnect the load and press the AC power button to rebooting the unit.

## **Q: When the EB3A is without loads, the screen reports**

**short.**

A: Please return it for repair if the error still exists after rebooting the unit.



## **Q: Wireless charging doesn't work**

**A:**

1. Confirm whether the mobile phone shows the charging sign. If so, it is normal, there is no charging power display due to the low power.
2. Turn-OFF the DC and restart the DC, take-OFF the mobile phone cover, adjust the mobile phone up and down to see if it can be charged, if it can be charged, it is the problem of the mobile phone or the mobile phone coil and the wireless board coil is not on.

## **Q: After EB70 is charged to 100% and used to 80%, the power suddenly drops to 0%.**

**A:** First discharge to automatic shutdown, then fully charge it to 100%, SOC has automatic learning correction function.

**Q: Can I charge this EB70 by dual charging?**

A: No.

**Q: Is there a button to turn ON/OFF the wireless charging?**

A: Yes, Press the DC Power Button to enable the wireless charging.

**Q: Can it charge and discharge at the same time?**

A: Yes, It can charge and discharge at the same time.

**Q: How do I know whether my devices will work well with this product?**

A: Please evaluate the total constant load of your appliances. If it doesn't exceed the Max. output power of EB70, you can use this power station to your appliances.

**Q: Can I use third-party solar panels to charge this product?**

A: Yes, you can. As long as the specs of solar panels you're using fall in below range:

OCV : 12-28V    Input Power: 200W Max.

With the same power connector (MC4)

Note: Do not mix different types of solar panels.



**Authorised Distributor in  
DubaiFor Bluetti products**

